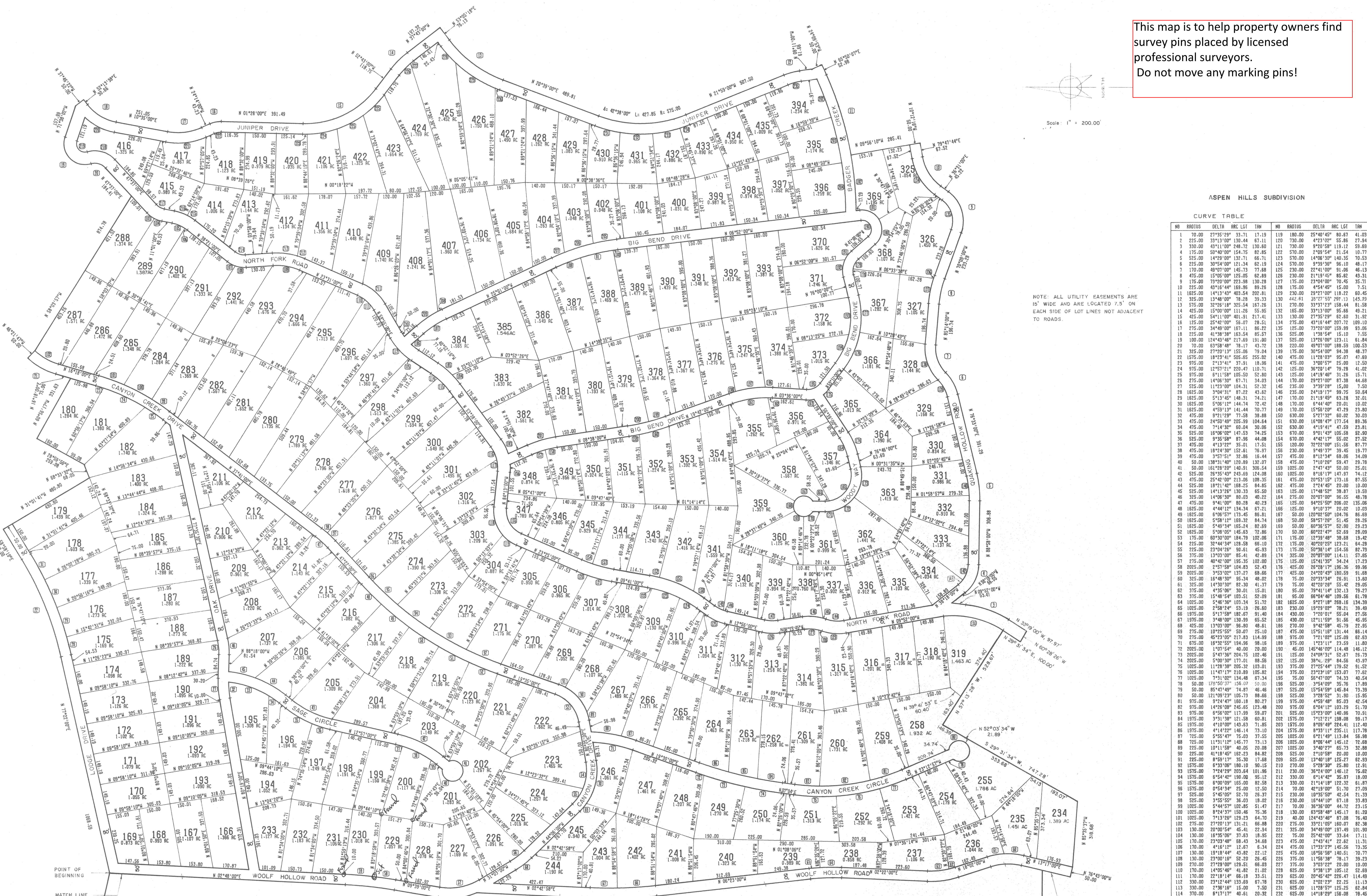
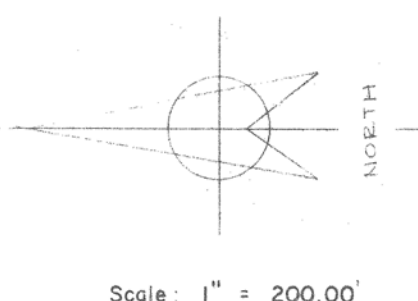


This map is to help property owners find survey pins placed by licensed professional surveyors. Do not move any marking pins!



ASPEN HILLS SUBDIVISION

CURVE TABLE

Table with 8 columns: NO, RADIUS, DELTA, ARC, LCI, TAN, NO, RADIUS, DELTA, ARC, LCI, TAN. It lists curve data for various lots and sections of the subdivision, including values for radius, delta angle, arc length, chord length, and tangent length.

NOTE: ALL UTILITY EASEMENTS ARE 15' WIDE AND ARE LOCATED 7.5' ON EACH SIDE OF LOT LINES NOT ADJACENT TO ROADS.