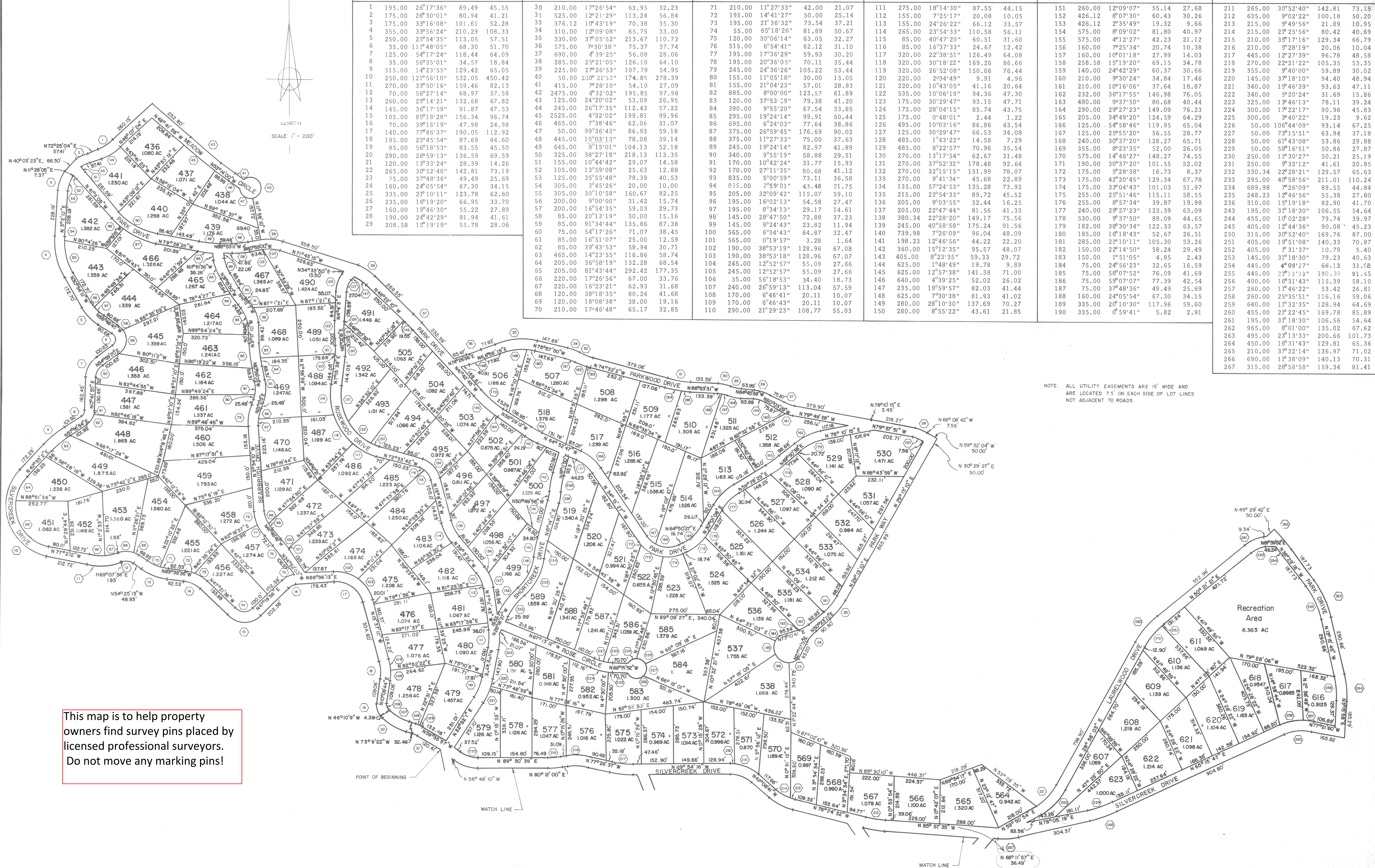


ASPEN HILLS SUBDIVISION CURVE TABLE

NO	RADIUS	DELTA	ARC LGT	TAN	NO	RADIUS	DELTA	ARC LGT	TAN	NO	RADIUS	DELTA	ARC LGT	TAN	NO	RADIUS	DELTA	ARC LGT	TAN	NO	RADIUS	DELTA	ARC LGT	TAN
1	195.00	26°17'36"	89.49	45.55	30	210.00	17°26'54"	63.95	32.23	71	210.00	11°27'33"	42.00	21.07	111	275.00	18°14'30"	87.55	44.15	211	265.00	30°52'40"	142.81	73.19
2	175.00	26°30'01"	80.94	41.21	31	525.00	12°21'29"	113.24	56.84	72	195.00	14°41'27"	50.00	25.14	112	155.00	8°07'30"	20.08	10.05	212	426.12	8°07'30"	60.43	30.26
3	175.00	33°16'08"	101.61	52.28	32	376.12	10°43'19"	70.38	35.30	73	195.00	21°36'32"	73.54	37.21	113	155.00	24°26'22"	66.12	33.57	213	426.12	2°35'49"	19.32	9.66
4	355.00	33°56'24"	210.29	108.33	33	310.00	12°09'08"	65.75	33.00	74	55.00	85°18'26"	81.89	50.67	114	265.00	23°54'33"	110.58	56.11	214	215.00	21°25'56"	21.89	10.95
5	250.00	25°54'35"	113.05	57.51	34	330.00	37°05'52"	213.67	110.73	75	120.00	30°06'14"	63.05	32.27	115	85.00	40°47'20"	60.51	31.60	215	210.00	35°17'16"	129.34	66.79
6	35.00	11°48'05"	68.30	51.70	35	575.00	7°30'38"	75.37	37.74	76	515.00	6°54'41"	62.12	31.10	116	85.00	16°37'33"	24.67	12.42	216	210.00	5°28'19"	20.06	10.04
7	125.00	54°17'24"	118.44	64.09	36	690.00	4°39'25"	56.08	28.06	77	195.00	17°36'29"	59.93	30.20	117	320.00	22°38'51"	126.49	64.08	217	445.00	12°27'39"	96.78	48.58
8	35.00	56°35'01"	34.57	18.84	37	285.00	25°21'05"	126.10	64.10	78	195.00	20°36'05"	70.11	35.44	118	320.00	30°18'22"	169.26	86.66	218	270.00	22°21'22"	105.35	53.35
9	515.00	14°23'55"	129.42	65.05	38	225.00	27°26'53"	107.79	54.95	79	245.00	24°36'26"	105.22	53.44	119	320.00	26°52'08"	150.06	76.44	219	355.00	9°40'00"	59.89	30.02
10	250.00	121°56'10"	532.05	450.42	39	50.00	200°21'52"	174.85	278.39	80	155.00	21°04'23"	57.01	28.83	120	220.00	2°34'49"	9.91	4.96	220	140.00	37°18'10"	94.40	48.94
11	270.00	33°50'16"	159.46	82.13	40	415.00	7°28'10"	54.10	27.09	81	155.00	21°04'23"	57.01	28.83	121	220.00	10°43'05"	41.16	20.64	221	340.00	15°46'06"	93.63	47.11
12	70.00	56°27'14"	68.97	37.58	41	2475.00	4°32'02"	195.85	97.98	82	885.00	8°00'01"	123.57	61.89	122	535.00	10°06'19"	94.36	47.30	222	340.00	9°20'24"	31.69	15.86
13	260.00	29°14'21"	132.68	67.82	42	125.00	24°20'02"	53.09	26.95	83	120.00	37°53'29"	79.38	41.20	123	175.00	30°29'47"	93.15	47.71	223	325.00	13°46'13"	79.11	39.24
14	145.00	36°17'59"	91.87	47.53	43	245.00	26°17'35"	112.43	57.22	84	390.00	9°55'20"	67.54	33.85	124	175.00	28°04'15"	85.74	43.75	224	300.00	17°22'17"	90.96	45.83
15	105.00	85°18'28"	156.34	96.74	44	2525.00	4°32'02"	199.81	99.96	85	295.00	19°24'14"	99.91	50.44	125	175.00	0°48'01"	2.44	1.22	225	300.00	3°40'22"	19.23	9.62
16	70.00	39°16'19"	47.98	24.98	45	465.00	7°38'46"	62.06	31.07	86	695.00	8°00'01"	77.64	38.86	126	495.00	10°03'16"	86.86	43.54	226	50.00	106°44'09"	93.14	67.25
17	140.00	77°46'37"	190.05	112.92	46	50.00	99°36'43"	86.93	59.18	87	375.00	26°59'45"	176.69	90.02	127	125.00	30°29'47"	66.53	34.08	227	50.00	73°15'51"	63.94	37.18
18	195.00	25°45'54"	87.69	44.60	47	445.00	10°03'13"	78.08	39.14	88	375.00	11°27'33"	75.00	37.63	128	485.00	1°43'22"	14.58	7.29	228	50.00	61°43'08"	53.86	29.88
19	85.00	56°18'53"	83.55	45.50	48	645.00	9°15'01"	104.13	52.18	89	245.00	19°24'14"	82.97	41.89	129	485.00	8°22'57"	62.96	35.54	229	50.00	58°16'51"	50.86	27.87
20	290.00	26°59'13"	136.59	69.59	49	325.00	38°27'18"	218.13	113.35	90	340.00	9°55'19"	58.88	29.51	130	270.00	13°17'54"	62.67	31.48	230	250.00	11°30'27"	50.21	25.19
21	120.00	13°33'24"	28.39	14.26	50	155.00	10°44'42"	29.07	14.58	91	170.00	10°42'24"	31.77	15.93	131	270.00	37°52'32"	178.48	92.64	231	250.00	9°32'12"	41.61	20.85
22	265.00	30°52'40"	142.81	73.19	51	105.00	13°59'08"	25.63	12.88	92	170.00	27°11'35"	80.68	41.12	132	270.00	32°15'15"	151.99	78.07	232	330.34	22°28'21"	129.57	65.63
23	75.00	37°48'05"	49.49	25.69	52	125.00	35°55'48"	78.39	40.53	93	835.00	5°00'59"	73.11	36.58	133	270.00	9°41'34"	45.68	22.89	233	295.00	40°58'56"	211.01	110.24
24	160.00	24°05'54"	67.30	34.15	53	305.00	3°45'26"	20.00	10.00	94	835.00	2°59'01"	43.48	21.75	134	135.00	57°24'53"	135.28	73.93	234	689.98	7°26'09"	89.55	44.84
25	335.00	16°10'11"	123.78	62.60	54	305.00	30°10'58"	160.67	82.25	95	205.00	32°09'42"	115.07	59.10	135	215.00	23°54'33"	89.72	45.52	235	248.23	12°46'56"	55.38	27.80
26	160.00	16°19'30"	66.95	33.70	55	200.00	9°00'00"	31.42	15.74	96	195.00	16°02'13"	54.58	27.47	136	205.00	9°03'55"	32.44	16.25	236	310.00	15°19'18"	82.90	41.70
27	160.00	15°46'30"	55.22	27.89	56	85.00	20°13'19"	30.00	15.16	97	195.00	8°34'13"	29.17	14.61	137	205.00	22°47'44"	81.56	41.33	237	240.00	29°27'23"	123.39	63.09
28	190.00	24°42'29"	81.94	41.61	57	200.00	16°54'35"	59.03	29.73	98	145.00	28°47'50"	72.88	37.23	138	380.34	22°28'20"	149.17	75.56	238	530.00	9°37'50"	89.09	44.65
29	208.58	15°19'19"	55.78	28.06	58	75.00	54°17'26"	71.07	38.45	99	145.00	9°24'43"	23.82	11.94	139	245.00	40°58'58"	175.24	91.56	239	182.00	38°30'34"	122.33	63.57
					59	85.00	91°34'44"	135.86	87.38	100	565.00	6°34'43"	64.87	32.47	140	739.98	7°26'09"	96.04	48.09	240	185.00	16°18'43"	52.67	26.51
					60	75.00	54°17'26"	71.07	38.45	101	665.00	0°19'57"	3.28	1.64	141	198.23	12°46'56"	44.22	22.20	241	285.00	21°10'11"	105.30	53.26
					61	85.00	16°51'07"	25.00	12.59	102	190.00	38°53'19"	128.96	67.08	142	360.00	15°12'35"	95.57	48.07	242	150.00	22°14'50"	58.24	29.49
					62	85.00	39°43'53"	58.94	30.71	103	190.00	38°53'18"	128.96	67.07	143	405.00	8°23'35"	59.33	29.72	243	405.00	1°18'13"	10.79	5.40
					63	465.00	14°23'55"	116.86	58.74	104	245.00	12°52'57"	55.09	27.66	144	625.00	1°48'49"	19.78	9.89	244	455.00	10°02'28"	79.74	39.97
					64	205.00	81°43'44"	292.42	177.35	105	245.00	12°52'57"	55.09	27.66	145	625.00	12°52'57"	59.33	29.72	245	405.00	12°44'36"	90.08	45.23
					65	205.00	81°43'44"	292.42	177.35	106	35.00	56°18'53"	34.40	18.73	146	640.00	4°39'25"	52.02	26.02	246	455.00	10°02'28"	79.74	39.97
					66	220.00	17°26'56"	67.00	33.76	107	240.00	26°59'13"	113.04	57.59	147	235.00	19°59'57"	82.03	41.44	247	75.00	37°48'36"	49.49	25.69
					67	220.00	16°23'21"	62.93	31.68	108	170.00	6°46'41"	20.11	10.07	148	625.00	7°30'38"	81.93	41.02	248	160.00	24°05'54"	67.30	34.15
					68	120.00	38°18'35"	80.24	41.68	109	170.00	6°46'41"	20.11	10.07	149	280.00	28°10'30"	137.69	70.27	249	640.00	11°32'35"	128.94	64.69
					69	120.00	18°08'38"	38.00	19.16	110	290.00	21°29'23"	108.77	55.03	150	280.00	8°55'22"	43.61	21.85	250	455.00	21°22'45"	169.78	85.89
					70	210.00	17°46'48"	65.17	32.85											251	195.00	31°18'30"	106.56	54.64
																				252	965.00	8°01'00"	130.02	67.62
																				253	495.00	23°13'33"	200.66	101.73
																				254	450.00	16°31'43"	129.81	65.36
																				255	210.00	37°22'14"	136.97	71.02
																				256	690.00	11°38'09"	140.13	70.31
																				257	315.00	28°58'58"	159.34	81.41



This map is to help property owners find survey pins placed by licensed professional surveyors. Do not move any marking pins!

NOTE: ALL UTILITY EASEMENTS ARE 15' WIDE AND ARE LOCATED 7.5' ON EACH SIDE OF LOT LINES NOT ADJACENT TO ROADS.